



BRAWLER[®] RUBBER CUTTING EDGES

Brawler[®] Rubber Cutting Edges are engineered for lasting performance. The shape, design and premium mining rubber compound extends the life of the edge. Our unique patented T-Shaped fastener system fits most bucket sizes.

Brawler[®] Rubber Cutting Edges are available in 3 length options: 36", 40" and 48".

FEATURES AND BENEFITS

- Options that fit most buckets
- Premium mining rubber compound that is abrasion and chunk resistant
- Enhanced shape increases service life
- 6" rubber thickness
- 2" tapered edge to aid in scraping low loads and to protect flooring



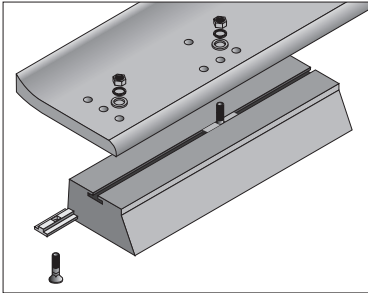
LOADER

BRAWLER[®]

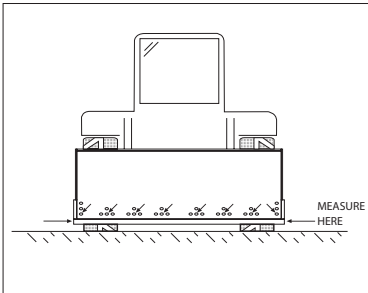
RUBBER CUTTING EDGES

FITTING GUIDE

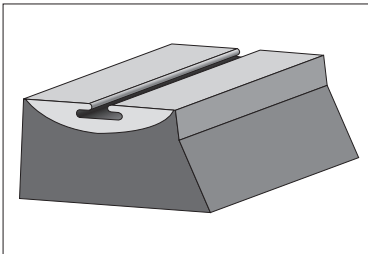
The quantity of fasteners depends upon the number of mounting holes on the bucket.



The Rubber Cutting Edge Fastener System uses a patented T-Shaped fastener that can accommodate most bolt patterns found on buckets. A small number of individual section lengths can be combined and arranged to suit all bucket widths.



Bolt hole size must be measured when fasteners are ordered. Available in 5/8", 3/4", 1", and 1-1/4" fastener assemblies.



For assistance in ordering the correct sizes and quantities contact your authorized Trelleborg dealer.

RUBBER VS. STEEL

"I can't believe that in the past we ever used steel cutting edges on our wheel loaders in our recycling operation. With the Brawler rubber cutting edges, whatever we push, the rubber hugs the floor and moves the product along easier than the steel edges did. And we no longer need to go back a second time to sweep the floor, because the Brawler edges clean the floor as it moves the product. With the steel edges we always had left-over residue."

Ivan Boodram

Equipment Maintenance Supervisor,
Turtle Island Recycling



Yokohama TWS North America, Inc.
107 Audubon Road - Building 2 - Suite 205
Wakefield, MA 01880
800-948-8473
info.tws@yokohama-tws.com
www.trelleborg-tires.com/en-us

Follow us

