



TRELLEBORG



Trelleborg



Superior performance for the toughest jobs

The new EMR1031, specially designed for wheel loaders, graders and articulated dump truck applications, is the optimal earthmover radial tire to take on every kind of loading operation.

Extremely versatile, it is made for the toughest work environments: infrastructure development, site preparation, open pits and quarries. The right void ratio balance of its tread pattern delivers superior control and a tight grip when needed most, whether working on sandy, rocky or hard surfaces.



1 Sidewall protector

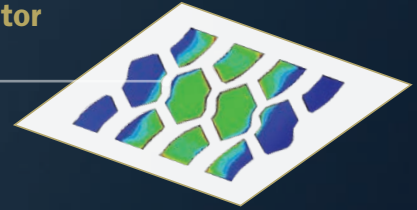
The premium sidewall protector prevents tire damage when working over rough ground, like rocky areas.



3 Wide tread contact area

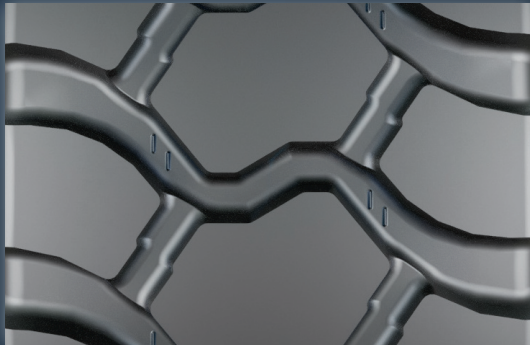
The wide footprint area results in even wear, excellent stability and reduced vibration for operator comfort.

+7%
vs Premium
Competitor



2 Cut-resistant compound

This high performing compound is up to 20% more resistant to cuts and wear compared to standard compounds. The tire lasts longer, reducing machine downtime, lowering cost per hour.



4 High tread depth

The deeper tread provides longer tire life and boosts the efficiency of your machine. The casing can also be retreaded, maximizing your investment in a sustainable way.



+10%
vs Premium
Competitor

EMR1031

Tire size	Tread pattern TRA	Rim size (Permitted)	Tread depth (32nd)	Service description LI/SS Loader/Transport	Tire load capacity (lbs) at 6 (mph)	Tire Pressure (psi)	Tire load capacity (lbs) at 25 (mph)	Tire Pressure (psi)
17.5 R 25	L3/G3	14.00/1.5-25 (14.00/1.5x25 DC, 14.00/1.3x25 DC)	39	* 176 A2/153 A8	15,653	65	8,047	44
20.5 R 25	L3/G3	17.00/2.0-25 (17.00/1.7-25)	45	**/* 193 A2/161 A8	25,353	83	10,196	44
23.5 R 25	L3/G3	19.50/2.5-25	46	**/* 201 A2/170 A8	31,967	83	13,228	44

*/** - Index of tire strength



Discover our website

Follow us



Yokohama TWS North America, Inc.
107 Audubon Road - Building 2 - Suite 205
Wakefield, MA 01880
800-948-8473
info.tws@yokohama-tws.com
www.trelleborg-tires.com/en-us